

# MyEquipAuctions

INDUSTRIAL DIVISION .com

June 12, 2023

## ONLINE ONLY Auction

**NO LONGER NEEDED IN THE CONTINUING OPERATIONS OF  
DESIGNCRAFT MANUFACTURING, INC.**

**1056 W. Republic Drive • Addison IL 60047**



**BIDDING STARTS: WEDNESDAY, JUNE 28TH**  
**BIDDING ENDS: WEDNESDAY, JULY 19TH**

### FEATURING:

- (2) 2022 Hyundai-Wia Model SE2200LSY CNC Multi-Function Turning Centers
- 2021 Hexagon Model Global S Green 5.7.5 System CMM
- 2019 Leadwell 3-Axis Model V-52AF CNC Vertical Machining Center
- 2018 Leadwell 3-Axis Model V-52AF CNC Vertical Machining Center
- 2013 Kitamura 3-Axis Model Mycenter 4XD CNC Vertical Machining Center
- 2012 Tongtai Model TMV-1050A CNC Vertical Machining Center
- 2010 Tongtai Model TMV-1050A CNC Vertical Machining Center
- (2) Bridgeport Model Torq-Cut 30 CNC Vertical Machining Centers
- (5) Bridgeport Model Torq-Cut 22 CNC Vertical Machining Centers
- Bridgeport Model VMC 3016 CNC Vertical Machining Center
- Hardinge Model Talent 8/66-L CNC Lathe
- Hardinge Model Talent 6/45 SV CNC Lathe
- Hardinge Model Quest 10/65 CNC Turning Center
- Hardinge Model Conquest GT-27SP CNC Lathe
- Hardinge Model CHNC1 CNC Lathe
- Bridgeport 1-1/2 HP Variable Speed Ram Type Vertical Mill
- Famco 12 ga. X 52" Model FS1252 Shear
- Hardinge Model HC Chucker Manual Lathe
- 2021 Gardner Denver 15 HP Model L11RS Tank Mounted Rotary Screw Air Compressor
- 2019 Gardner Denver 15 HP Model L11RS Tank Mounted Rotary Screw Air Compressor
- 2013 Ford Model Transit Connect XL Van

**W** GLENN A.  
**INTERNITZ** LLC  
INDUSTRIAL AUCTIONEERS & APPRAISERS

1401 Lunt Avenue • Elk Grove Village, Illinois 60007 • P. 773-290-1827 • F. 773-866-9601  
glenn@winternitzauction.com

**www.winternitzauction.com**



# ABSOLUTE LIQUIDATION AUCTION

**PRECISION MANUFACTURING INSTITUTE**

**Tool & Die & Welding Equipment  
Office & School Furniture & More!!!**

**Located at**

**764 Bessemer St • Meadville, PA**

**Saturday, June 17th • 9AM**



## EQUIPMENT

- Haas Super VF4 CNC mill
- 2001 & 2008 Haas mini mills
- 4, 2006 Haas TL1 CNC lathes
- Haas SL10 tail stock CNC lathe
- Haas TR210H trunnion
- Lincoln Elec. ec cell robotic welding station w/ Fanuc 100iBE 6 axis robot & Lincoln Power Wave 355 welder
- Fanuc M-710i C50 robot w/ R-30iA control
- Fanuc LR Mate 200iB5P robot w/ R-J3ib Mate controller
- Fanuc LR Mate 100i robot w/R-J2 controller
- 2, 2007-08 Fanuc Robo Drill Mate machining centers
- 2, J head Bridgeport manual mills
- 2, Bridgeport automatic manual mills w/power feed
- 5, Sharp manual mills w/ power feed
- Clausing 4914 lathe
- Clausing Colchester 13" lathe
- 2, Standard Modern 1340 lathes
- 2, South Bend G-26T lathes
- 2, Clausing 1300 lathes
- Chevalier FSG-618M surfaces grinder
- 4, Harig 618 surface grinders
- Charmilles Form 20ZNC ram EDM

- Sodick hole popper
- Torit dust collectors
- Gardner Denver Electro-Screw compressor
- vertical air compressor
- 200 gal. air tank
- J & L 14T comparator
- 2, OGP Top Bench Projectron IV comparators
- Mitutoyo PJ 300 profile projector
- Ram Optical Sprint CNC 300 dimensional measuring system
- Brown & Sharpe Reflex 343 CMM
- MPM BMT 200 balancing station
- Techniks 9,000 watt shrink fit station
- 3'x3' surface plate w/base
- m2 Hyd-Mech DM-10 double miter bandsaws
- Roll-In saw • Jib crane
- Presto 1000# elec. Lift
- pallet jacks
- Trinco blast cabinet
- 2, B&D ¼ hp, 3 phase grinders
- Rockwell ¼ hp, 3 phase drill press
- Metal Pro MP400 ironworker

- Edwards Jaws IV 55 ton ironworker
- Nugier hydraulic press
- Baldor belt sander & bench grinder
- approx. 40 Lincoln welders (mig, tig & stick)
- Lincoln mini weld gas extractors
- welding rod oven
- new welding rod & wire
- welding wire spooler
- lots of work benches
- welding tables
- many surface plates
- flammable materials cabinet
- material carts & tables
- new & scrap steel
- electric motors
- bench vices and more!

## SMALLS

- 5 sets Mitutoyo square Cera blocks
- Herman Schmidt & Suburban magnetic sine plates
- gage pins • indicator bases • height gauges
- micrometer sets • depth gauges • grinder vises
- wheel dressers • Kurt 6" vises • spin fixtures
- polishing equip.
- lots of new & resharpened endmills, taps, drills, reamers, inserts, etc.

- cat. 40 & 50 tool holders, tools & carts
- collets • lathe tools & holders
- new welding rod & wire
- many Kennedy tool boxes & bases
- multiple heavy-duty cabinets & drawer units
- new hardware • socket sets
- hand tools and much more!

## OFFICE

- Large conference tables
- multiple matching furniture sets
- office suites
- desks
- office chairs
- leather sets
- horizontal & vertical file cabinets
- many computers, monitors, keyboards
- laptops
- printers
- Toshiba 4505ac copier/printer
- student desks & workstations
- lab tables
- cafeteria type tables & chairs
- stackable poly chairs
- podiums
- café tables & chairs
- refrigerator/freezers and much more!

**NICOLLS & AUCTIONS**

**AU-5325L**

**(814)333-1988 or (814)720-1988**

**nicollssandauctions@gmail.com**

**Open Viewing  
Friday June 16th • 3-5 PM**

See [#1520](http://auctionzip.com) or [nicollssandauctions.com](http://nicollssandauctions.com) for full listing & photos & terms.

This is a very small ad for a very large auction! Imagine the items a tooling/machining & welding school would have and multiply it by 2. On site parking, refreshments & rest rooms available.

**ABSENTEE BIDS WELCOME:** Contact auctioneer for details.





Tel: 713-462-5800

www.harris-auctions.com

**Live Webcast Auction**

**BidSpotter.com**

No onsite bidding. All bids made at [www.BidSpotter.com](http://www.BidSpotter.com)

**Surplus Asset Management Experts**

**Auctioneer: Jean A. Harris, Jr. Texas Lic. 18210**

**Surplus to Drill-Quip, Inc.  
Huge lot of Metrology,  
QA / QC Instruments & Equipment**

**Auction: Wednesday, June 14, 10:00am CT**

**Inspection: Tuesday, June 13, 9 - 3pm CT**

At the facility of:



6401 N. Eldridge Pkwy.  
Houston, TX 77041  
Building G

Call 713-462-5800 for details

**Quality Assurance / Quality Control Instruments:**

Loads of Micrometers, Calipers, Gauges, Hardness Testers and more!



Mitutoyo OD Micrometer Set, No. 103-186A



Mitutoyo OD Micrometer 3 Pc Set, No. 103-139B



Mitutoyo OD Micrometer Set,



Mitutoyo OD Micrometer No. 104-138



Faro Arm, with Laptop and Backpack supplies



Faro Laptop



Mitutoyo Dial Height Gauge



Mitutoyo Mechanical O.D Micrometer Set



Mitutoyo Mechanical O.D Micrometer Set



Mitutoyo Indicating Micrometer Jeweled Series



Lot of 2 Mitutoyo Micrometers; Spherical & Caliper-Type



Lot of 3 Chart Recorder Hydro Test.



Lot of 12: Mitutoyo Mechanical OD Micrometer



Scherr-Turnico OD Micrometer with anvils



Lot of 2 OD Micrometers: Scherr-Turnico & Chuan Brand



In partnership with:



847-427-3333

[www.PerfectionIndustrial.com](http://www.PerfectionIndustrial.com)

# MVB INDUSTRIES

HIGH END 5-AXIS OKUMA AND 5-AXIS HAAS CNC VERTICAL MACHINING CENTERS,  
OKUMA GENOS L-300MYW CNC LATHE WITH MILLING AND LIVE TOOLING Y-AXIS  
AND SUB SPINDLE, 5 HAAS MINI MILLS

510 Goolsby Blvd #5  
Deerfield Beach (Miami), Florida 33442

BID ONLINE AT: **BidSpotter**

**STARTS: Monday, May 29th - 9:00 AM EDT**  
**ENDS: Thursday, June 15th - 10:00 AM EDT**



High End 5-Axis Okuma and 5-Axis Haas CNC Vertical Machining Centers, Okuma Genos L-300MYW CNC Lathe with Milling and Live Tooling Y-Axis and Sub Spindle, Okuma 2-Axis CNC Lathes, Star 20mm SR-20 Precision Swiss Screw Machine, 5 Haas Mini Mills, Amada HA-250W Automatic Bandsaw, new 2016, Forklift, Shop Support Equipment, Faro Inspection Table and Arm, Haas Rotary Tables, Tooling, Kurt Vices, Chucks, NSK 50k RPM Air Spindles, Scrap Metal and much much more.

Wednesday, June 14th • 8:00 AM EDT – Thursday, June 15th • 5:00 PM EDT  
Contact Jared Gray to set up an inspection • [jared@premierarg.com](mailto:jared@premierarg.com) • 847-951-8901

Visit Our Website for Listing, Updates, and Photos  
[www.premierarg.com](http://www.premierarg.com)

**DO YOU HAVE MACHINES TO SELL???**  
**CALL 312-280-1234**

Go to: [www.premierarg.com](http://www.premierarg.com) for further updates

Need an auction? Give us a call  
312-280-1234



MACHINES FOR SALE?  
CALL 312-280-1234

**REGISTER & BID ONLINE - Buyers Premium: 18%**  
**[www.premierarg.com](http://www.premierarg.com)**

Premier License: 044000209 Glenn Gray License: 041000721

Premier Asset Recovery Group: 77 E. Palatine Rd., Prospect Heights, IL 60070

**312-280-1234 • [info@premierarg.com](mailto:info@premierarg.com)**



# AUCTION CALENDAR

## INDOOR VERTICAL FARMING FACILITY - TIMED ONLINE AUCTION

**MAY 31ST**

South San Francisco, CA

### Agriculture & Packaging Equipment

- Seeding & Vertical Farming Components
- Cryogenic Chilling and Retail Tray Packing Line (order of process)
- Chillers, Dehumidifiers, Air Handlers & Switchgear



Indoor Vertical Farming Facility

## COMPLETE ICE CREAM PRODUCTION AND PACKAGING FACILITY - TIMED ONLINE AUCTION

**JUNE 6TH**

Marietta, GA & Sheboygan, WI

### High Road Craft Ice Cream

- Stainless Silos and Tanks
- Ice Cream Production
- Technogel Sandwich Line
- Bakery and Production Department
- Packaging Equipment



HIGH ROAD CRAFT ICE CREAM

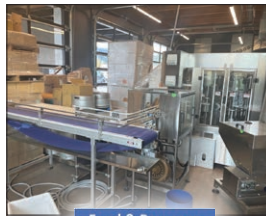
## FOOD EQUIPMENT EXPO – SURPLUS FOOD PROCESSING & PACKAGING MACHINERY

**JUNE 13TH**

Hood River OR  
Memphis, TN  
Centerbrook, CT

### TIMED ONLINE AUCTION Special Offering of

- Rotary Glass Bottling Line
- Over 200,000 Glass Bottles
- Compressor
- Case Packer, Sleever
- Stretch Wrapper, Palletizer
- Stainless Tanks



Food & Beverage Packaging Equipment Expo

## BAKERY PRODUCTION & PACKAGING EQUIPMENT - TIMED ONLINE AUCTION

**JUNE 15TH**

Bayport (Long Island), NY

### Surplus to the needs of EuroPastry Bakery

- Bread, Bun & Roll Production Lines
- Flour Mixing, Sifting & Bulk Storage
- Spiral Freezers - Production Support
- Packaging Equipment
- Material Handling Trucks



europastry

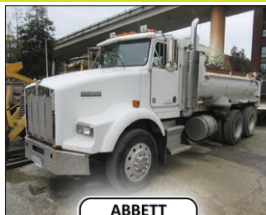
## HEAVY MOBILE EQUIPMENT & TRUCKS, PORTABLE TOOLS + ELECTRICAL INVENTORY

**JUNE 20TH**

San Francisco, CA

### TIMED ONLINE AUCTION No longer needed by Abbett Electric Corp.

- Heavy Mobile Equipment
- Dump, Boom, Bucket, Service, Flatbed & Pickup Trucks
- Portable Tools & Equipment
- Steel Plate, Light Posts & Electrical Inventory



ABBETT ELECTRIC CORPORATION

## COMPLETE POTATO CHIP PRODUCTION PLANT- REAL ESTATE INCLUDED

**TURN KEY OFFERING THROUGH JUNE 2023**

Dayton, OH

### Formerly of Mikesell's Snack Food Company

- Potato Receiving & Prep
- Batch Type Kettle Chip Cooking System
- Continuous Chip Cooking Department
- Maddox MX650 Baked Cheese Puff Line



Mikesell's

## COMPLETE OPERATING BAKERY OF DIVINE DELIGHTS – ARTISAN BAKER OF PETITS FOURS & COOKIES

**JULY 11TH**

Petaluma, CA

### Hand Crafted Artisan Producers of

- Chocolate Confections
- Multi-Layer Petits Fours
- Cakes, Tarts & Special Cookies
- Demitasse Chocolate & Easter Gifts
- Bakery Production Equipment



DIVINE DELIGHTS

## COMPLETE BREWERY & DISTILLERY

**TURN-KEY OFFERING**

San Francisco, CA

### Formerly operated by Seven Stills Brewery & Distillery

- Brewhouse & Fermenting Tanks
- Pot Stills & Production Support
- Can Packaging & Keg Filling Systems
- Restaurant, Bar & Quality Control Lab



SEVEN STILLS

**Leading Industrial And Commercial Liquidators.**

**Contact Rabin Worldwide For Your Liquidation And Equipment Needs Today.**

**Check Rabin.com For More Upcoming Food & Confectionery Equipment Auctions**

**+1.415.522.5700**

**Email: info@rabin.com**

See it all now at... **rabin.com**

# ONLINE ONLY Auction

## V BROTHERS MACHINE CORP.

4900 W. 16th Street • Cicero, IL 60804

**BIDDING STARTS: MONDAY, JUNE 5TH**

**BIDDING ENDS: WEDNESDAY, JUNE 21ST**



### FEATURING:

#### HIGHLIGHTS INCLUDE--

- 2014 MAZAK QUICK TURN SMART 350 CNC TURNING CENTER
- 2012 MAZAK QUICK TURN SMART 300 CNC TURNING CENTER
- 2012 MAZAK MODEL NEXUS QT 200-II CNC TURNING CENTER
- 2011 MAZAK MODEL QUICK TURN NEXUS 350II CNC TURNING CENTER
- 1997 MAZAK MODEL QT-30 CNC TURNING CENTER
- MAZAK MODEL QT-8N CNC LATHE
- (2) 2012 & 2010 CLAUSING KALAMAZOO MODEL KC12AX HORIZONTAL BANDSAW
- 2011 MARVEL MODEL MARK II SERIES 8 VERTICAL BANDSAW
- 1995 CLAUSING COLCHESTER 30 IN. X 60 IN. MODEL MASTIFF GH ENGINE LATHE
- CLAUSING COLCHESTER 25 IN. X 160 IN. ENGINE LATHE
- CLAUSING COLCHESTER 17" IN. X 80 IN. ENGINE LATHE
- (2) CLAUSING COLCHESTER 15" ENGINE LATHES
- CLAUSING COLCHESTER 13" ENGINE LATHE
- (2) 1998 SOUTHWEST MACHINE MODEL TRAK DPM CNC VERTICAL MILLING MACHINES
- (6) BRIDGEPORT 2HP SERIES I VERTICAL MILLING MACHINES
- SMTW 20 X 120 MODSEL MH50BX120 UNIVERSAL CYLINDRICAL GRINDER
- SMTW 320 X 1500MM CYLINDRICAL GRINDER
- SMTW MODEL 300 X 1600MM MODEL M7130 SURFACE GRINDER
- BROWN & SHARPE MODEL 618 MICROMASTER HORIZONTAL SURFACE GRINDER
- HANSFORD/DAVIS NO. 15 KEYSEATER
- SUNNEN MODEL 1812 PRECISION HONING MACHINE
- BLANCHARD 42 IN. MODEL 22AK-42 ROTARY SURFACE GRINDER
- BLANCHARD 42 IN. NO. 20D ROTARY SURFACE GRINDER
- BLANCHARD 30 IN. NO. 18 ROTARY SURFACE GRINDER
- WARNER & SWASEY NO. 4A TURRET LATHE
- BULLARD 46 IN. DIA. DYNATROL VERTICAL TURRET LATHE
- DEVLIEG MODEL 4H-96 JIGMILL
- DEVLIEG MODEL 3B-72 JIGMILL
- (2) DEVLIEG MODEL 2B-36 JIGMILLS
- OIL GEAR HORIZONTAL HYDRAULIC BROACH
- BOWES RADIAL ARM DRILL
- CASER RADIAL ARM DRILL
- 2003 ATLAS COPCO 10HP MODEL GX7 AIR COMPRESSOR
- MITUTOYO MODEL BH715 COORDINATE MEASURING MACHINE
- MISC TOOLING & ACCESSORIES
- ASSORTED INSPECTION EQUIPMENT
- MILLER WELDERS
- 1998 ISUZU/GMC MODEL W4500 SINGLE AXLE STAKE BED TRUCK
- 1999 CHEVROLET 2500 LS 4X4 PICKUP TRUCK W/ PLOW
- TOYOTA 5300 LB. CAP. LP MODEL 42-6FGU25 FORKLIFT TRUCK
- TOYOTA 3750 LB. CAP. MODEL 42-6FGU25 LP FORKLIFT TRUCK

**W** GLENN A.  
**INTERNITZ** LLC  
INDUSTRIAL AUCTIONEERS & APPRAISERS

1401 Lunt Avenue • Elk Grove Village, Illinois 60007 • P. 773-290-1827 • F. 773-866-9601

glenn@winternitzauction.com

**www.winternitzauction.com**



**SALE DATE**
**MAY 25 • 10AM CT**


**Welding, Cladding, Fabrication  
& Rolling Stock - Surplus to  
Ongoing Operations**



**Houston, TX**

**FEATURING:**

(5) Vertical Weld Overlay Cladding Systems, Welding Manipulators and Positioners, Tank Turning Rolls, Welding Power Supplies, Metal Fabrication and Machine Shop, Forklifts up to 30,000 lb Cap., Rough Terrain Cranes, CAT Dozer, CAT Grader, EZ-Go Carts, Tools & more

**BIDDING ENDS**
**JUNE 6 • 10AM ET**


**Surplus Forklifts,  
Packaging & Warehouse  
Support Equipment**



**Freehold, NJ**

**FEATURING:**

(10) CROWN Order Picker and Sit-Down Forklifts, (5) CROWN Ride on Pallet Jacks, JLG Scissor Lift, (2) 2017 ID TECHNOLOGY LSI 1300 Top Panel Label System, (2) KAESER ASD 40 Air Compressors, Dryers, Cardboard Balers & Compactor, Large Selection of Plant Support Incl. HD & Packaging Tables, Shop Carts & more

**BIDDING ENDS**
**JUNE 8 • 10AM CT**


**Short Notice Auction  
for Surplus Assets of  
SandenVendo America Inc.**



**Dallas, TX**

**FEATURING:**

KOMATSU OBS110 & OBS60 Gap Frame Presses, ROWE/CWP Feed Line, SHARP 2180 Gap Bed Engine Lathe, BRIDGEPORT Series I Vertical Mills, Radial Arm Drills, Grinders, MITUTOYO PH-R14 Optical Comparator, Lab Furnaces, Blast Cabinet, Vises & more

**SALE DATE**
**JUNE 13 • 10AM ET**


**Surplus to Precision  
Machining, Fabrication  
and 3D Printing Facility**



**Concord, NC**

**FEATURING:**

2005 HAAS VF-5B/40XT & 2007 HURCO VMX 24 Vertical Machining Centers, 2005 HAAS SL20T & 2008 HAAS SL 10 Turning Centers, Tooling, 2014 STRATASYS BJET 500 3D Printer, COSEN Horizontal Band Saw, Grinders, Vertical Mill, Welding, Inspection Equipment, Power Tools & more

**PRE-AUCTION OFFERS INVITED FOR MAJOR ASSETS**

**AUCTION CONTACT:**

**Jennifer Reiner • (847) 545-6374**  
jennifer@perfectionindustrial.com



**PERFECTION**  
Industrial Sales  
[www.perfection.global/auctions](http://www.perfection.global/auctions)



2

ONLINE  
AUCTIONSPART 2  
DALLAS/FT. WORTH

2101 Joel East Road • Fort Worth, Texas 76149

**ONLINE BIDDING ENDS: TUESDAY, JUNE 13TH STARTING AT 10:00AM CT****INSPECTION:** By appointment only with [ryan@cia-auction.com](mailto:ryan@cia-auction.com)PART 3  
SALT LAKE CITY

6363 West Dannon Way • West Jordan, UT 84081

20 Miles SW of Salt Lake City

**ONLINE BIDDING ENDS: WEDNESDAY, JUNE 14TH STARTING AT 10:00AM MT****INSPECTION:** By appointment only with [ryan@cia-auction.com](mailto:ryan@cia-auction.com)**\*PALLET RACK WILL BE DISMANTLED AND PREPPED FOR SHIPMENT PRIOR TO AUCTION\*****PALLET RACK & COMPONENTS**

- (1,700+) UPRIGHTS BY INTERLAKE, RIDG-U-RAK AND SPACERAK FROM 42" X 14'H TO 42" X 33'H
- (10,000+) 8' & 10' STEP BEAMS
- (10,000+) VARIOUS WIRE DECKS

**SORTING SYSTEM**

- TREW SORTING SYSTEM - \$1.5M INVESTMENT - SEE WEBSITE FOR COMPLETE INFORMATION

**PACKAGING & RELATED**

- (2) AUTOBAG FAS SPRINT REVOLUTION SIDPOUCH BAGGING SYSTEMS (NEW 2020)
- LANTECH C-400 CASE ERECTOR (NEW 2019)
- (3) 3M 700A3PRO BOX TAPERS
- **BALERS**
- MARATHON GEMINI-XTREME HORIZONTAL BALERS (NEW 2022)
- PTR VERTICAL BALER (NEW 2019)

**WAREHOUSE SUPPORT EQUIPMENT**

- AIR COMPRESSORS BY ATLAS COPCO CURTIS & IR UP TO 30HP
- (2) TENNANT ELECTRIC FLOOR SCRUBBERS
- LARGE QTY. YELLOW GUARDRAIL
- LARGE QTY. MISC. WAREHOUSE SUPPORT - S.S. TABLES, PLASTIC STEPS, RUBBERMAID CARTS & DUMP HOPPERS, PALLET JACKS, LADDERS, DUMP HOPPERS, DOCK PLATES, TRASH CANS & MORE

CINCINNATI  
INDUSTRIAL  
AUCTIONEERS

auctioneers | appraisers | since 1961

[www.cia-auction.com](http://www.cia-auction.com)

In Conjunction With

NEW MILL  
CAPITAL[www.newmillcapital.com](http://www.newmillcapital.com)

18% BUYERS PREMIUM IN EFFECT FOR ALL PURCHASES

JOSEPH FINN CO., INC.  
AUCTIONEERS AND APPRAISERS[www.josephfinn.com](http://www.josephfinn.com)





# PMI AUCTIONS

## PIPE FABRICATION FACILITY

Featuring: 2017 Cloos Robotic Pipe Welding System; 2019 Watts-Mueller CNC Plasma and 2015 Vernon CNC Oxy Pipe Profilers; (21) Welding Positioners; Manipulators; Plasma Burning Table; (30+) Welding Power Sources incl. (16) Miller Pipeworx new as 2019; (7) Forklifts up to 22,000-lb. cap.; Spotting Truck; Galion 15 T. Hyd. Rough Terrain Crane; (11) 2 T. Proserv Wall Jibs; Trailers; Fire Trucks, More



2017

CLOOS  
ROBOTIC  
PIPE WELDING  
SYSTEM



2019

WATTS-  
MUELLER  
MDL. W-364  
CNC PIPE  
CUTTING AND  
PROFILING  
MACHINE

**WEDNESDAY, JUNE 14 • 10:00 A.M.**  
**LIVE ONLINE WEBCAST (NO ONSITE BIDDING)**

Assets Located at the Former  
**S&B MODULAR  
OPERATIONS  
FACILITY**  
**3959 OSCAR NELSON JR. DRIVE,  
BAYTOWN, TEXAS 77523**



AS NEW AS  
2019

(1 OF 16) MILLER PIPEWORX  
400 WELDING SYSTEMS



PANGBORN 6LK-9 BLAST CLEANING SYSTEM

### INSPECTION:

Monday & Tuesday,  
June 12 & 13, 9:00 A.M.  
to 4:00 P.M.



CATERPILLAR  
20,000-LB.  
BASE CAP.  
DIESEL FORKLIFT



GALION 15 T.  
HYD. ROUGH  
TERRAIN CRANE

FOR ONLINE BIDDING AT THIS AUCTION. Go to [www.pmi-auction.com](http://www.pmi-auction.com) and click on  
**BidSpotter** or **proxibid** on our calendar page for this auction sale.

Read Partial Terms  
& Conditions on Page 7

**18% BUYER'S  
PREMIUM**

Sale Conducted By:

**PLANT & MACHINERY INC.**

AUCTIONEERS • APPRAISERS • LIQUIDATORS • REAL ESTATE

1304 Langham Creek Drive, Suite 454, Houston, Texas 77084

PHONE: (713) 691-4401

FAX: (713) 672-7905

Ron Moore, TX Lic. #7314

E-MAIL: [pmi@pmi-auction.com](mailto:pmi@pmi-auction.com) • WEBSITE: [www.pmi-auction.com](http://www.pmi-auction.com)

HOUSTON • DALLAS • ST. LOUIS

In Conjunction With:



105 Revere Drive, Suite C, Northbrook, IL 60062

[www.pplauction.com](http://www.pplauction.com)

Phone: 224-927-5320 | Fax: 224-927-5311



# 2-DAY ONLINE AUCTION



Industry Leading Designer &  
Manufacturer of Ride Systems  
& Theme Park Attractions



PEDDINGHAUS FBD2500 CNC PLATE PROCESSOR



ABR MOD-U-BLAST SAND BLAST ROOM



PARTIAL VIEW OF MILLER & LINCOLN ELECTRIC WELDERS



HYDMECH S35P SEMI-AUTO BANDSAW

FEATURING: CNC Plate Processor • Iron Worker • Press Brake • Shear • Saws • Lathes & Mills • Sand Blast Room • Paint & Support Equipment • Welding & Support • Quality Control • Crane Systems • Forklifts & Rolling Stock • Vehicle Hoist • Air Management • Specialty Amusement Ride Test Equipment • Electrical • Portable Structure • Steel & Scrap Metal (300+ tons) • Warehouse Industrial Racking & Support • Sea Containers • Shop Tools & Plant Support • Office Equipment & Electronics • \$2.5M in New Inventory • More

BIDDING CLOSES: **WED./THUR. JUNE 14 & 15 • Noon EDT**

INSPECTION: **TUES. JUNE 13 • 9 AM – 4 PM or By Appointment**

LOCATION: **1765 Coast Meridian Rd. Port Coquitlam (Vancouver), British Columbia, Canada**

BID ONLINE at  
**BidSpotter.com**

 **INFINITY**  
Asset Solutions

Sale in  
conjunction  
with:

**Joiner**  
SALES CORP

**www.infinityassets.com • 905.669.8893**



# ONLINE ONLY AUCTION

Surplus to the Needs of:

**Baker Hughes** 

BROKEN ARROW, OKLAHOMA (TULSA) FACILITY

## LATE MODEL EXCEPTIONALLY WELL MAINTAINED CNC MACHINING AND RELATED EQUIPMENT

**ONLINE BIDDING ENDS:** Thursday, June 15th, Starting at 11:00am EDT

**ASSET LOCATION:** 3000 N. Hemlock Circle, Broken Arrow, OK 74012

**INSPECTION:** By Appointment Only – Contact Link Auctions

### MULTI-MILLION DOLLAR AUCTION OF LATE MODEL CNC MACHINES, THOUSANDS OF LOTS:

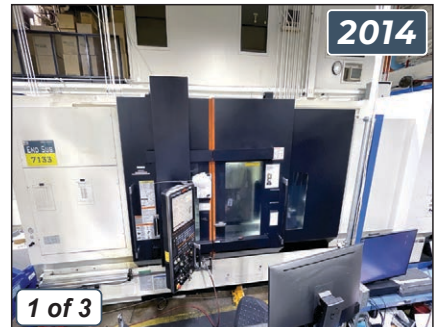
**(7) Mazak Integrex Multi-Tasking Centers:** E670H2 (2012) & (6) E550H2 (2007 & 2006) • **(12) CNC Lathes:** (5) Mazak Slant Turn 50N (2012), (3) Mazak Quick Turn & Nexus 500-LBB (2014) & 350 LBB (2014), (2) Weiler E-90 & E-70, Mori-Seiki ZL-153 • **CNC Vertical Machining Center:** OKK KCV 800 • **CNC Horizontal Machining Center:** HM6300S • **CNC Cylindrical Grinder** • **Inspection** • **Forklifts** • **Toolroom Machinery** • **Much, Much More!!!**



Mazak Integrex E670HII CNC Multi-Tasking Center



Mazak Integrex E-500H II CNC Multi-Tasking Center



Mazak Quick Turn Nexus 500-LBB CNC Lathe



Mazak Slant Turn 50N CNC Lathe



OKK KCV800 CNC Vertical Machining Center



OKK HM6300S Dual Pallet CNC Horizontal Machining Center

For Additional Information Contact Jake Josko at 224.230.5922 or [jake.josko@linkauctions.com](mailto:jake.josko@linkauctions.com)

18% Buyer's Premium will Apply for this Sale



**LINK AUCTIONS**  
Equipment Appraisals | Global Auctions | Industrial Asset Remarketing

475.273.0268

| [linkauctions.com](http://linkauctions.com)

**ONLINE ONLY LIVE WEBCAST via BidSpotter**  
**CADTEK STAMPING – SURPLUS TO ONGOING OPERATIONS**

**CAD@TEK**

**Stamping, Machining & Fabrication Facility**

**DATE: JUNE 15TH • 10:00 AM**

**INSPECTION: June 14TH • 9:00 AM - 4:00 PM**

**LOCATION: 321 Humberline Dr. • Toronto, ON M9W 5T6**



**PRESSES**

- **STEELWELD** 500 Ton, Ram & Bolster: 108" x 48", Shut Height 22" Min, 28" Max, 12" Stroke, 16 – 40 SPM, 24" Window
- **DANLY** 250 Ton, Ram & Bolster: 62" x 36", Shut Height 14" – 20", 12" Stroke, 30 SPM, SN
- **MINSTER** 250 Ton, Ram & Bolster: 48" x 36", Shut Height 16" – 25", 12" Stroke, 30 SPM, SN
- **SUTHERLAND** 220 Ton, Ram 73" x 26", Bolster 95" x 36", Shut Height 15.4" – 19.7", 9" Stroke, 45 SPM, SN
- **BLISS** 200 Ton, Ram & Bolster 72" x 42", Shut Height 12.5" – 22", 12" Stroke, 40 – 80 SPM, \*Note: Requires Repairs To Drive, Quoted At C\$22,000, SN
- **SUTHERLAND** 121 Ton, Ram 26" x 21", Bolster 45" x 28", Shut Height 10" – 12", 7.09" Stroke, 70 SPM, SN
- **AIDA** 110 Ton, Ram 53" x 20", Bolster 74" x 20", Shut Height 13.77", 4.3" Stroke, 50 – 100 SPM, SN
- **BROWN BOGGS** 110 Ton, Ram 28" x 21", Bolster 42" x 26", Shut Height 12" – 15", 6" Stroke, 60 SPM, SN
- **BLISS** 60 Ton, Ram 16" x 16", Bolster 32" x 22", Shut Height 7" – 10.5", 70 SPM, SN
- **STOLLE** 60 Ton, Ram 32" x 42", Bolster 42" x 36", Shut Height 11.5" – 12", 2.5" Stroke, 50 – 300 SPM, SN

- **WARCO** 50 Ton, Ram 20" x 16", Bolster 27" x 19", Shut Height 12" – 14", 6" Stroke 30 SPM, SN
- **BROWN BOGGS** 40 Ton, Ram 14" x 10", Bolster 28" x 22", Z Shut Height 8" – 10", 2.5" Stroke, 110 SPM, SN
- Large Assortment of Uncoilers, Straighteners, Feeders

**MACHINING & FABRICATION**

- **TAKUMI SEIKI**, CNC Vertical Machining Center Model V22A, Mitsubishi Control, Travels: X 86.6", Y 33.49", Z 29.5", 86" x 28" T Slot Table, 82" x 30" Riser Table W Threaded Anchor Base Plate, 37.43" Max Distance Spindle To Table, 24 ATC, Cat 50, Cam Speed 4500 RPM, Coolant, Chip Conveyor, 30 HP, 1999, SN C0167
- **BRIDGEPORT** Discovery Torq Cut 22 CNC Vertical Machining Center, Travels: X 22", Y 16", Z 20", 48" x 18" Table, Max Table Weight 750 Lbs, Max Spindle Speed 6000 RPM, 22 ATC, DX 32 Control, Cat 40, Max Feed Rate 472 IPM, 7.5 HP
- **YSD FABMASTER** Press Brake Model PPT 100/30, Max Cap 100 Ton x 10', Distance Between Uprights 100", Stroke 7.87", Distance Table To Ram 15.7", 2000, SN 20218
- **FABMASTER** Hydraulic Swing Beam Shear Model S1025, 10' x 1/4" Capacity, 1 x 4' Squaring Arm, 1 x 4' Support Arm, 10 HP, 2000, SN 441

- (3) Surface Grinders By **PROTH & CHEVALIER** Up To 36" x 18"
- (5) Mills By **FIRST AND LILIAN**
- (2) Radial Drills
- **MICROWEILY** Lathe Model TY-1845S, 9" 3 Jaw Chuck, 70-1600 RPM, Tailstock, Steady Rest, Kopfer GS 2 B Tool Holder
- **SODICK** Model AQ 325L Wire EDM, LN1W Control, 32" x 24" Inside Capacity, Coolant, SN T0320
- **MITUTOYO** CMM Model Bright Apex A504, 3982M-3112, Travels: X 19.88", Y 15.94", Z 15.94", Renishaw PH50 Probe, 28" x 34" Table, SN 1739006C

**MATERIAL HANDLING**

- (3) Forklifts By **YALE & HYSTER** Up To 10,900 Lb Capacity
- Skyjack Scissor Lift
- Steel Mezzanine, Approx. 12' x 15.5" Overall, 90" Under Decking, 146" To Top Railing, Ladder Stairs
- Plus: Welders, Tumbler, Compactor, HD Racking, Precision Inspection Tables, Measuring, Office & More.

**Payment Deadline June 16 – 5 pm ET**  
**Exit Deadlines: All non press items Friday June 23,**  
**All presses Friday June 30.**  
**Exclusive rigging applies – details to follow soon**



**WORKINGMAN  
CAPITAL**

**info@workingmancapital.com**

**416-847-7336**

**workingmancapital.com**





# PUBLIC AUCTION

## LIVE WEBCAST - NO ON-SITE BIDDING

### TUESDAY - JUNE 27TH - 10:00 AM

## SUPCO INC. FORMERLY SUPERIOR COMPANIES, INC

### 101 N JOHNSTONE AVENUE • BARTLESVILLE, OK 74003



**CNC TURNING CENTERS:** 2013 DMC DL35, FANUC Oi-TO CONTROL, 5" BORE, 15" 3-JAW, 10-POSITION TURRET, PRESETTER, TAIL STOCK, CHIP CONVEYOR • 2000 HAAS SL30TB, 15" 3-JAW, 12-POSITION TURRET, PRESETTER • (4) 1999 HAAS SL20T, 8" 3-JAW, 10-POSITION TURRET, TAIL STOCK • 1997 HAAS HL-4, 8" 3-JAW, 12-POSITION TURRET, TAIL STOCK, PRESETTER, CHIP CONVEYOR • HAAS 4TH AXIS ROTARY TABLE • 1983 MORI SEIKI SL-6B, FANUC 6T CONTROL, 25" 4-JAW, 12-POSITION TURRET, TAIL STOCK • 1980 MORI SEIKI SL-2B, YASNAC CONTROL, COLLET CHUCK, 10-STATION TURRET, 12" TERRY BAR FEED • (2) MORI SEIKI TL-5A, 10" 3-JAW, 8-POSITION TURRET, YASNAC 2000G CONTROL • 1980 MORI SEIKI SL-4, YASNAC CONTROL

**CNC VERT. MACHING CENTERS:** MORI SEIKI, M# MV-35/40, YASNAC MX1 CONTROL, 14" X 43" TABLE, 20-TOOL ATC

**PARTS MACHINES:** 1997 HAAS HL-4, S/N 60759 • 1997 HAAS #3 VMC, S/N 9818 • 1991 ENSHU 630H DUAL PALLET, S/N 15-MA • 1997 HAAS HL-4 TURNING CENTER, S/N 61017 • 2006 KAPO VMC-21100, FANUC 18-M CONTROL, 39" X 94" TABLE

**TOOLING:** LG. QTY. CAT 40 TAPER TOOL HOLDERS • CAT 50 TAPER TOOL HOLDERS • LATHE CHUCKS • SKY HOOK 36" TOOLING HOIST • KURT MILL VISES • HARD & SOFT JAWS • BORING BARS • TAPER & STRAIGHT SHANK DRILL BITS • INSERT TOOL HOLDERS • 8" - 15" MANUAL ROTARY TABLES • COLLET SETS • ANGLE PLATES • HOLD DOWN CLAMPS • TOGGLE CLAMPS • AIR TOOLS • TAPMATIC TAPPING HEADS • ADJ. BORE HEADS • WACHS PORTABLE PIPE BEVELER

**MANUAL MILLS:** BRIDGEPORT V.S. VERT. MILL, SERIES 1-2HP, 3-AXIS DRO • BRIDGEPORT 2HP V.S. VERT. MILL, 2-AXIS DRO • BRIDGEPORT 1.5 HP V.S. VERT. MILL • CINCINNATI 5HP HORIZ. MILL

**MANUAL LATHES:** SIGMA 32" X 11" ENGINE LATHE, 27" 4-JAW, 3" SPINDLE HOLE, Q.C. TOOL POST, TAPER • HARDINGE DSM-59 2ND OP LATHE • HERCULES AJAX 19" X 96" GAP BED ENGINE LATHE, 15" 4-JAW, TAPER, Q.C. TOOL POST • DAINICHI DLG-80 21" X 76" GAP BED ENGINE LATHE, Q.C. TOOL POST, 15" 3-JAW • LEBLOND 18" X 75" ENGINE LATHE, 13" 3-JAW, TAPER, Q.C. TOOL POST • JET GH-1442X ENGINE LATHE, 14" X 40", 10" 3-JAW, STEADY REST • COLCHESTER 15" X 50" ENGINE LATHE, 10" 3-JAW, Q.C. TOOL POST, TAIL STOCK • BULLARD 24" VTL, 24" 4-JAW CHUCK

**GRINDERS:** CINCINNATI M# 2 CENTERLESS GRINDER • NORTON 10" X 15" SURFACE GRINDER • KO LEE B6060 TOOL & CUTTER GRINDER • BLACK DIAMOND M# 0 DRILL GRINDER • DAREX M-5B DRILL BIT SHARPENER • BENCH GRINDERS • KALAMAZOO 2" VERT. BELT SANDERS

**DRILL PRESSES:** IKEDA 14" X 48" RADIAL ARM DRILL PRESS, M# RM-1975 • SOLBERGA GEAR HEAD DRILL PRESS • (4) YUASA AUX-500 20" DRILL PRESSES • ROCKWELL 17-600 DRILL PRESS

**INSPECTION:** MICROMETERS UP TO 24" • MITUTOYO DIGITAL HEIGHT GAUGES • MICROMETER SETS • BROWN & SHARP MICROXCEL CMM • OGP XL-14 14" OPTICAL COMPARATOR • HARDNESS TESTER • DIAL BORE GAUGES • GAUGE PIN SETS • THREAD & RING GAUGES • GRANITE SURFACE PLATES • BENCH CENTERS • TORQUE WRENCHES

**MISC. MACHINES:** FAMCO 4R RATCHET ARBOR PRESS • EMPIRE CAB-3660S SLEEVE TYPE BLAST CABINET • DONALDSON TORRIT DFT 3-6 DUST COLLECTOR • DAVIS KEYSEATER • PEDRICK M# D10 3" ROTARY TUBING BENDER • 3" VERT. BELT SANDER

**CRANES:** (23) COLUMN & FLOOR MOUNT JIB CRANES, ½ TO 2-TON • 2-TON X 30' BRIDGE CRANE • (3) ANVER DUAL CUP 1,000 LB. CAP. VACUUM LIFTERS

**PUNCHES/PRESSES:** W.A. WHITNEY 647C FABRICATING PUNCH W/PLASMA, 40 TON, 5' X 10' TABLE, HYPER THERM PLASMA M# HT2000 • 38" X 25 TON HYD. H-FRAME PRESS W/BROACHES • CUSTOM BUILT HORIZ. 48" HYD. BROACH • FABRICO 150 TON HYD. BUMPER PRESS, M# 8TL • ~300 TON C-FRAME HYD. PRESS, 15" THROAT, ~24" STROKE • VERNON 105 TON OBI PUNCH PRESS, M# 7-1/2 OBI, 27" X 38" BOLSTER • WHITNEY C-FRAME HYD. PRESS • DAKE 36" HYD. H-FRAME PRESS

**BAND SAWS:** 1990 HE&M M# H120M HORIZ. • 1981 HE&M M# 1200A HORIZ. • 1980 HE&M M# 1000A HORIZ. • MARVEL M# 81 VERT. BAND SAW

**PLATE ROLLS:** WEBB 7L-1010 INITIAL PINCH ROLL, 3/8" X 10' CAP. • PEXTO 390D 16 GA. X 3' SHEET METAL ROLL

**SHEARS & IRONWORKERS:** STEELWELD ¾" X 12' SHEAR, M# 12E12, MECHANICAL, 36" FOBG, 36" THROAT • CINCINNATI M# 2512 SHEAR, 3/8" X 10' CAP, 6" SQUARING ARM, 36" BACK GAUGE • GEKA HYDRACROP 80/A 80-TON IRON WORKER • SCOTCHMAN 75 TON IRONWORKER, M# 9075 • SCOTCHMAN 5075C9-80

**PRESS BRAKES:** VERNON 150 TON X 12' MECH. PRESS BRAKE, M# B-710-150 • VERNON 50 TON MECH. PRESS BRAKE, 8' OVERALL, MANUAL BACK GAUGE • CINCINNATI 130 TON X 10' MECH. PRESS BRAKE, M# 130-8 • DI-CRO 3' MECHANICAL PRESS BRAKE, M# 36 • LG. QTY. PRESS BRAKE PUNCHES & DIES

**WELDING:** PRESTON EASTIN PA30HD6 3,000# POSITIONER, 36" TABLE • WORTHINGTON 4P HORIZ. POSITIONER W/4' X 4' TABLE • RANSOME 3-H HORIZ. 30" POSITIONER • WORTHINGTON 36" POSITIONER • WORTHINGTON 25-H 2,500# POSITIONER • (2) PRESTON EASTIN MMTH 2' X 2' MANIPULATORS • MILLER CP-2501S TIG WELDER W/COBRAMATIC PUSH/PULL GUN • MILLER SYNCROWAVE 350LX TIG WELDER • MILLER CP-302 S CP-200 MIGS • MILLER DELTAWELD 452 • LINCOLN IDEALARC TIG-300/300 • HYPER THERM MAX100 PLASMA CUTTER W/HAND HELD GUN • TANK TURNING ROLL SET • H&M 36" PIPE BEVELER • COOLMATE CHILLERS • PHOENIX ROD OVEN • FIXTURES • WELD CURTAINS • WELD TABLES UP TO 2.5" THICK • TORCH CARTS

**INVENTORY:** LG. QTY. MISC. SIZES ALUM. & STEEL ROUND BARS • ROUND TUBING • SQUARE TUBING • APPROX. (8,000) NEW CARDBOARD BOXES, 18" X 14.5" X 9.25" • NEW OWENS CORNING 1" X 24" X 48" FELT INSULATION SHEETS • NUTEC CERAMIC FIBER SHEETS

**FORKLIFTS:** (2) NISSAN MUGLO2A30DV 6,000 LB. FORKLIFTS, 3-SECTION MAST, 58" FORKS, A/T TIRES, LPG, APPROX. 7,000 HOURS

**SUPPORT:** (3) DILLON DYNOMOMETERS • (2) 20 YD. ROLLOFF DUMPSTERS • (30+) 36" X 36" X 19" PALLET TABLES • (38) 24" X 34" X 20" STEEL PARTS TUBS • WIRE BASKETS • SHOP CARTS • DUMP HOPPERS • (3) CART-MTD. FIRE EXT. • SHOP FANS • MACHINERY SKATES • CANTILEVER BAR/SHEET STORAGE RACKS • STACKABLE PARTS RACKS • SAW HORSES • PALLET JACKS • LADDERS • FLAMMABLES CABINETS • TOLEDO 1,000 LB. PLATFORM SCALE • MARSH STENCIL MACHINES • MAINTENANCE PLATFORMS • UP-RIGHT ALUM. SCAFFOLDING • TOOLS • CARTON STAPLER

**OFFICE:** (3) BREAKROOM PICNIC TABLES • FILE CABINETS • LANIER LD325 CONSOLE COPIER • MICROWAVES • WOOD BOOK SHELVES • FORMICA TOP DESKS • 4' X 8' OVAL CONFERENCE TABLE • WOOD DESKS • METAL CABINETS • LATERAL FILES • KYOCERA TASKALFA 306CI CONSOLE COPIER • YORK 24" X 24" X 40" TUMBLER TYPE OFFICE SAFE

Terms: 18% buyer's premium (ONLINE OR PROXY BIDS). FULL PAYMENT MUST BE MADE DAY OF AUCTION. We accept cash, cashier's check, check with bank letter of guarantee, or wire transfer. NO credit cards will be accepted! Sales tax will be charged without tax exemption being submitted to Duckwall & Co., Inc.

48 hours prior to sale! REMOVAL IS AT BUYER'S RISK & EXPENSE. ITEMS MUST BE REMOVED BY WEDNESDAY, ??? @ 4:00PM!! (See Removal instructions)

**DUCKWALL & COMPANY, INC.**  
AUCTIONEERS • APPRAISERS  
PRINCIPAL AUCTIONEER: DANIEL R DUCKWALL

918.836.3611 OFFICE  
918.838.1004 FAX  
duckwallauctions.com  
P.O. Box 580187 • Tulsa OK 74158

BidSpotter.com

Online Bidders

Register 48 Hours Prior To Auction Buyers Premium Will Apply  
See duckwallauctions.com For More Details



2

## WEBCAST AUCTIONS



WEBCAST AUCTION OF MACHINING AND FABRICATION FACILITY INCLUDING HAAS VMC'S AND TC'S, LATHES, BORING MILLS, VERTICAL MILLS, GRINDERS, TOOLING, TUBE BENDER, SAWS, CLARK LIFT TRUCK, FORD PICKUP TRUCK, SHOP AND SUPPORT EQUIPMENT

**DIE-TECH MACHINE, INC.**

1650 County Road 22A • Bloomingdale, OH 43910

**SALE DATE: TUESDAY, JUNE 27TH • 10:00 AM****INSPECTION:** Day Prior From 10:00 AM to 4:00 PM**CNC VMC'S AND TC'S**

- HAAS VF-5/50 CNC VMC (2007)
- HAAS VF-3 CNC VMC (2011)
- HAAS ST-10 CNC TC WITH SERVO BAR 300 BAR FEEDER (2017)
- HAAS SL-40 CNC TC (2008)
- HAAS SL-30T CNC TC (2005)

**LATHES, BORING MILLS, AND SSC PRESS**

- 33" X 120" LODGE AND SHIPLEY 3220 LATHE WITH 28" CHUCK
- 20" X 120" KINGSTON HL-2500 LATHE WITH DRO
- LUCAS MODEL 441B-72 HORIZONTAL BORING MILL WITH DRO
- KURAKI MODEL KBT-1003W HORIZONTAL BORING MILL WITH DRO
- 150 TON DANLY H2-150-48-42 SSC PRESS
- 18" CWP SMX-18 SERVO FEEDER

**75 TON EDWARDS JAWS IV IRONWORKER**

- VARIOUS SIZE HD WELDING TABLES

**TOOLROOM AND RELATED MACHINERY**

- 3 HP ACER E-MILL VERTICAL MILL WITH DRO (2011)
- DC MORRISON KEYSATER
- 6" X 18" CHEVALIER GRINDER
- 36" MATTISON MODEL 24 ROTARY SURFACE GRINDER

**4' ARM X 9" COL. CARLTON RADIAL ARM DRILL****SHOP AND SUPPORT EQUIPMENT**

- 8,000 LB. CLARK GCP-40 LP GAS PNEUMATIC TIRE LIFT TRUCK
- 2007 FORD F-250XL SUPER DUTY DIESEL PICKUP TRUCK
- (2) 2013 - 18' QUALITY TRAILER WOOD DECK TANDEM AXLE TRAILERS
- (10) 42" ARM X 10' HIGH CANTILEVER RACKS
- (4) 1 TON AND 1/2 TON X 12' HANDLING SYSTEM JIB CRANES
- (2) 10 HP INGERSOLL RAND UP6-10-125 AIR COMPRESSORS

**FABRICATION MACHINERY**

- BAILEIGH MODEL M250 TUBE BENDER (2009)
- 2,000 LB. ARONSON HD20A-PTVR2 WELD POSITIONER
- (2) 18" MARVEL TILT FRAME VERTICAL BAND SAWS

**(2 AVAILABLE)**

WEBCAST AUCTION OF VERY CLEAN LOW HOUR AMADA MACHINERY INCLUDING (2) AMADA AE-2510NT CNC TURRET PUNCHES (2016 AND 2014), (2) AMADA HG-8025 CNC PRESS BRAKES (2015 AND 2014), PUNCH AND BRAKE TOOLING, DCM PDG-5 GRINDER, SHEET RACKS

**SURPLUS AMADA MACHINERY**

2323 Reach Rd • Williamsport, PA 17701

**SALE DATE: WEDNESDAY, JUNE 28TH • 11:00 AM****INSPECTION:** By appointment only with jeffjr@cia-auction.com**CNC TURRET PUNCHES AND RELATED**

- (2) 22 TON AMADA AE-2510NT CNC TURRET PUNCHES, VERY CLEAN, LOW HOURS (NEW 2016 AND 2014)
- PUNCH TOOLING AND CABINETS
- DCM WILTON MODEL PDG-5-3 ROTARY GRINDER

**CNC PRESS BRAKES**

- (2) 88 TON X 102" AMADA HG-8025 CNC PRESS BRAKES, VERY CLEAN, LOW HOURS (NEW 2015 AND 2014)
- PRESS BRAKE TOOLING

**SHEET STORAGE RACKS**

- (2) REMOVABLE SHELF SHEET STORAGE RACKS



18% BUYERS PREMIUM IN EFFECT FOR ALL PURCHASES

Cincinnati Industrial Auctioneers - IN License No. AC63004471 • Jeffrey L. Luggen - IN License No. AU01051612 • Joseph M. Luggen - IN License No. AU11200137



**CINCINNATI  
INDUSTRIAL  
AUCTIONEERS**  
auctioneers | appraisers | since 1961

**Check our website for ongoing & future auctions!****BidSpotter**

For Photo Gallery &amp; Sale Catalog &amp; Additional Information Visit:

**www.cia-auction.com**





# 2-DAY INDEPENDENCE DAY PUBLIC AUCTION

13340 Florida Blvd.  
Livingston, LA 70754  
Preview : Wednesday | June 28th, 2023 | 9-4

**Thursday & Friday | June 29-30, 2023 | 9 am**



## WATCH WEBSITE FOR UPDATES

### ACCOUNT MANAGERS:

Kurt Sonnier 225.363.8778 and Jason Bush 225.431.0542



Selling Construction Equipment,  
Industrial Equipment, Forestry  
Equipment, Forklifts, Lifting  
Equipment, Attachments, Welding  
Supplies, Asphalt Equipment,  
Safety Equipment, Farm Equipment,  
Tractor Trucks, Service Trucks,  
Dump Trucks, Pickups, Trailers,  
Containers, ATVs, Campers, Boats,  
Motorcycles, and More!!

**QUESTIONS?**  
**CALL 800-850-2252**  
**OR 225-686-2252**

**[www.HendersonAuctions.com](http://www.HendersonAuctions.com)**



**Liquidations | Government Surplus | Marine  
Industrial | Farm | Construction | Collector Cars**

**What can we sell for you? 225.686.2252**

13340 Florida Blvd. Livingston, LA 70754 | 225.686.2252

10% Buyer's Premium on each item purchased.

Auctioneer: J. Henderson LA-1160 | MS-1601 | MS Firm 426



# TAMCO Professional Coatings Retirement Online Only Auction

Bidding Open Now | Closes: Thursday, July 20th



SCAN ME

Location: 175 Thompson Rd. Houma, LA 70363

Henderson Auctions has been commissioned to liquidate industrial vacuums, dust collectors, heat exchangers, vehicles, pressure washers, welding equipment, dehumidifiers, and More!!

All items will sell absolute to the highest bidder. Questions? 225.686.2252



Auction Details and Lot Listings at: [www.HendersonAuctions.com](http://www.HendersonAuctions.com)




 **Henderson**  
**AUCTIONS**

Find the Auction List at:  
[www.HendersonAuctions.com](http://www.HendersonAuctions.com)  
What can we sell for you? Call Today 225-686-2252

13340 Florida Blvd. Livingston, LA 70754 | 225.686.2252 | [info@hendersonauctions.com](mailto:info@hendersonauctions.com)  
10% Buyer's Premium on each item purchased. | Auctioneer: J. Henderson LA-1160 | LA AB-459

Download our Mobile App!  
Search "Henderson Auctions"

GET IT ON  
 Google Play

Download on the  
 App Store



# ONLINE AUCTION OF A MAJOR HVAC FACILITY

**GMI INC.**

1 Chips Lane, Fishkill, NY 12524

**Online Bidding Ends:  
Tuesday, June 13th at 12:00 P.M. EST**


**FEATURING:** • **CNC Plasma Table:** 2015 Vicon Fabricator-SS 510 Hi-Definition • **Press Brake:** 90-Ton X 12' W/ 2' Horn (14'O.A.) Wysong Mdl. 90-10 - Also Large Assortment of Dies • **Power Squaring Shear:** 10' X 10ga Wysong • **Sheet Metal Machinery Includes:** Lockformer TDC-14, Lockformer Cleatformer, Flagler #18 Pittsburgh, Pexto Rolls, Chicago D&K 4' x 12GA Hand Brake • **Power Notcher:** Amada Mdl. CSH-220 • **Horizontal Bandsaw:** DoAll C-916M • **Angle Roll:** 2011 Baleigh R-M10 • **Welders:** Miller Syncrowave 200, Millermatic 210, Miller 12000 Watt Bobcat 250, Alphil Spot Welders • **Forklift:** Late-Type 5400# Heli Mdl. CPYD30-MIH (250Hrs!) • ABB Mdl. ACH-400 AC Drive Frequency Speed Control, Trane M-Series Hepa & 30HP Fan Modulators • **Miscellaneous Machinery** including Vertical Air Compressors, Pexto Stake Table, Johansson Radial Drill, 2018 20' CIMC Sea Container, TMC Clean Bench, Duct Lift, Pallet Racking, Qty of Power and Hand Tools, ETC. - Large Qty of Hardware including Hex Screw, Bolts, Anchors, Washers, ETC. - **Assorted Stainless Steel, Aluminum and Steel Angle and Sheets** - **SHADE AND BLIND COMPONENTS:** Including Pneumatic Bench Press for Slots, Materials, Cutters, Clutches, Chains, End Caps, Cords, Window Tinting, ETC!

**INSPECTION DATE: MONDAY, JUNE 12TH FROM 8:00 A.M. TO 4:00 P.M.**  
**For more information visit [www.linkauctions.com](http://www.linkauctions.com)**



**LINK AUCTIONS**  
Equipment Appraisals | Global Auctions | Industrial Asset Remarketing



631.257.0252 | Cell: 631.445.2315  
[auctions@linkauctions.com](mailto:auctions@linkauctions.com)  
**[www.LinkAuctions.com](http://www.LinkAuctions.com)**

## TIMED ONLINE ONLY AUCTION TOOL & DIE EQUIPMENT



### AUCTION

Tuesday, June 20, 2023  
Lots Begin to Close at 10:00am CST

### LOCATION

1717 Kenosha Road  
Zion, IL 60099

### INSPECTION

Monday, June 19, 8:00am to 3:00pm CST, or Earlier by Appointment  
Brian Clettenberg, 847.729.3380, [brianc@winternitz.com](mailto:brianc@winternitz.com)

### HIGHLIGHTS INCLUDE

- Harrison Alpha 550 "S" Plus Gap Bed CNC Lathe
- Cincinnati Milacron Falcon 200 ERL CNC Lathe
- Cincinnati Milacron Arrow-500 ERO CNC VMC
- Milltronics Partner MB14 Series A CNC Vert. Mill
- Okamoto Grind-X Precision Auto. Surface Grinder
- Okamoto BW-360 Wheel Balancer
- Fanuc A04B-0304-B001-UF CNC Wire EDM
- Xermac X-12 and XP-12 Ram-Type EDM Machines
- Moore No. G18 Jig Grinder
- Moore No. 1 Jig Grinder
- Moore Precision 175,000 RPM High-Speed Head
- Moore Precision Wood Craftsman Tool Cabinet
- Victor 618EM Precision Tool Room Lathe
- Howa Sangyo Model Strong 1000 Engine Lathe
- LeBlond Engine Lathe
- Bridgeport 2-HP Series I Vert. Mill, 48 in., Ball Screw
- Bridgeport 2-HP Series I Vertical Milling Machine
- Bridgeport 1-1/2 HP Vertical Mill, Ball Screw
- Bridgeport 1/2-HP Model T Cherrying Head
- Okamoto 6 in. x 12 in. Linear 6-12/14 Surface Grinder
- Mitsui (MHT) 6" x 12" MSG-200MH Surface Grinder
- Acer 6 in. x 18 in. AGS-618 Surface Grinder
- Boyar-Schultz 6" x 12" H612 Challenger Surface Grinder
- Boyar-Schultz 6" x 12" Surface Grinder
- Abrasive Machine Tool 6" x 12" No. 1-1/2 Surface Grinder
- Jones-Shipman 6 in. x 12 in. 66671 O.D./I.D. Grinder
- Crystal Lake Belt-Driven Cylindrical Grinder
- Aget 5-HP 20T51-1RC 24-Bag Dxust Collector
- Sunnen MBB-1660 Precision Honing Machine
- Parma Mfg. 12 in. Roll-A-Matic Portable Vertical Band Saw
- Aircro 450-Amp Model CV-450 Aircromatic Mig Welder
- Pratt & Whitney Bench-Top Wheel Forming Attachment
- Speedaire 10-HP 1WD88 2-Stage Air Compressor
- Deltronic 14 in. DH214 Bench-Top Optical Comparator
- iCan Plus 20x Bench-Top Video Inspection System
- Large Quantity Inspection Tooling
- Kurt and Bridgeport Vises
- 3R Tooling and CAT-40 Tooling
- Carbide Insert Tooling & Much, Much, More!!!



Cincinnati Milacron CNC Lathe



Harrison CNC Gap Bed Lathe



Cincinnati Milacron CNC VMC



Fanuc CNC Wire EDM



Okamoto Auto. Surface Grinder

Sale Conducted by:



**Winternitz Industrial  
Auctioneers & Appraisers**  
[www.winternitz.com](http://www.winternitz.com)



Proud Member of:

**INDUSTRIAL  
AUCTIONEERS  
ASSOCIATION**

Charles Winternitz,  
IL Lic. #440.000541  
Winternitz Ind. Auctioneers Firm,  
IL Lic. #444.000571

**BID ONLINE AT:  
BidSpotter**

18% Buyer's Premium.

**Call us today  
for a confidential  
consultation at  
847.272.0440 or email:  
[charlie@winternitz.com](mailto:charlie@winternitz.com)**

WEBCAST AUCTION

Company Closing

# SIMION FABRICATION, INC.

901 W EGYPTIAN AVE. in CHRISTOPHER, IL 62822

**WED, JUNE 14 at 10AM CT**

Inspection - Day prior to auction from 9AM - 4PM

## FABRICATING & TOOLROOM EQUIPMENT

Cincinnati & Wysong Press Brakes to 400-Ton • 12' Shear • Bertsch Plate Bending Roll • Scotchman and Geka Ironworkers • Chicago Dries & Krump Finger Brake • 10' Leaf Brake • Track Burners • Welders & Plasma Cutters • Mittler Brothers Tubing Notcher • (2) Wells Horizontal Band Saws • Lenox Band Saw • Cold Saw • Ridgid Pipe Threader • Air Compressors to 50-HP • Clark 30,000-lb. & CAT 5,000-lb. Forklifts • Shipping Containers & More

**LARGE AMOUNT OF STEEL & SCRAP!!**



18% BP | Thomas C. Bowling, Managing Auctioneer - 441.002436 • MBA, Inc. - 444.000274

**MYRON BOWLING**  
AUCTIONEERS, INC.

(513) 738-3311 | MyronBowling.com

Facility Closing

# PACESETTER EXHAUST

(2) LOCATIONS IN PHOENIX, AZ

**THURS, JUNE 15 at 9AM MT**

Inspection - Day prior to auction from 9AM - 4PM

## MULTI-MILLION DOLLAR AFTERMARKET AUTOMOTIVE EXHAUST INVENTORY

**Complete Catalytic Converter and Exhaust Tube Facility**  
(6) Eaton Leonard & Eagle Tube Benders • Tube Cutoff Machines • Edelbrock Tube Presses, Swagers & End Formers • Genesis/Panasonic Welding Robots • Horizontal & Vertical CNC Mills • Plasma Cutter • Nakamura Tome & Okuma CNC Lathes • Brown & Sharpe & Tsugami Screw Machines • Niagara, Minster, & Bliss OBI and Gap Presses • Jetline Seam Welder • Air Compressors • Forklifts • Welders • Band Saws • Pickup Trucks



18% BP | Thomas Bowling, Auctioneer

**MYRON BOWLING**  
AUCTIONEERS, INC.

(513) 738-3311  
MyronBowling.com

**Revelation Machinery**

# TIMED ONLINE AUCTION

**SURPLUS MACHINERY FROM  
MEDICAL, AEROSPACE MANUFACTURES  
AND MACHINE SHOPS**

**LOTS START CLOSING:**

**TUESDAY, JUNE 20TH • 1:00 PM CT**

Lots are located at multiple locations, see lots for location.

**INSPECTIONS BY APPOINTMENT.**



18% Buyer's Premium applied to on-line bidders who purchase at this sale.

Bid at

**BidSpotter**



Hamel, MN 55340 • 612-325-7060  
www.strandindustrialauctions.com

WEBCAST AUCTION

LARGE QUANTITY OF EQUIPMENT IS NEW AND NEVER INSTALLED

# ROGERS CORPORATION

165 S PRICE RD, CHANDLER, AZ 85224

**WED, JUNE 21 at 10AM MT**

Inspection - Day prior to auction from 9AM - 4PM

(4) Complete 60"W Treating Lines - Wolverine Proctor & Schwartz Lab Treating Line 48"W, **UNUSED 2019 Myers 100-HP Tank-Mounted Mixer**, Model 600/800-100-1780 on SS 1,200 Gallon Jacketed Tank, **UNUSED 2019 Myers 100-HP Tank-Mounted Mixer**, Model 600/800-100-1780 on SS 1,200 Gallon Tank, (2) **WALKER 100-Gallon SS Tanks** Includes (2) Complete Myer Dispersion Mixers, Center Tank-Mounted, **2013 Rosenthal Sheeter**, 56"W, Model WM-5, (2) **TMP Multi-Station Hyd. Presses**, 60"W x 60" Deep, Hot Oil Systems Available, (2) 60"W Plate Washers

**Still In Original MFG Crates - RTO Unit, Never Used • Material Handling Systems, Air Handling SS Tanks, Several Pneumatic Butterfly Valves & Associated Items • Spencer Dust Collector System • Packaged Boilers • Kaeser Air Compressor • Cleaver Brooks Boiler**



18% BP | Thomas Bowling, Auctioneer | See MyronBowling.com for complete details

**MYRON BOWLING**  
AUCTIONEERS, INC.

(513) 738-3311  
MyronBowling.com

**Revelation Machinery**



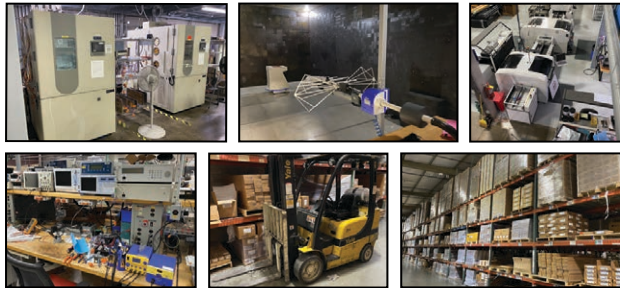
WEBCAST AUCTION

TWO-DAY AUCTION, TWO LOCATIONS  
**UNIVERSAL DOUGLAS LIGHTING AMERICAS**  
 1430 WALL TRIANA HWY SW, MADISON, AL 35756  
 160 CHARTER PL, LA VERGNE, TN 37086  
**THURS, JUNE 22 & FRI, 23 at 10AM CT**  
 Inspection - Day prior to auction from 9AM - 4PM

**DAY 1 - ALABAMA - Commercial Lighting Solutions R&D Facility**  
 100's of Pieces of Late-Model Test & Measurement Equipment • (20+) Environmental Test Chambers • **AVI** Speedprint SP710 • **Panasonic** NM-EJM2D Placement Machine • **JT Automation** HS-1002 Reflow Oven • Complete Maintenance Shop • Spare Parts • Raw Materials & Components • Forklifts • Office Furniture

**DAY 1 - TENNESSEE - Complete Distribution Facility**  
 (300+) Sections of Pallet Racking • (10) Fork Lifts, Reach Trucks & Order Pickers - **NEW AS 2014** • Stock Chaser • Battery Chargers • Shrink Wrappers • Portable Offices • Test Equipment • Packaging

**DAY 2 - \$8,000,000 Ind'l Lighting Controls, Fixtures & Systems**  
 Finished Goods & OEM Components • LED Fixtures, Lighting Controls, Drivers, Modules, Retrofit Kits, LED Tubes, Control Systems, Ballasts • 39,000+ Ballast Replacements, Electronic HID & Sign Ballasts, Linear Fluorescent Ballasts • Assorted LED Light Fixtures • 65,000+ T5/T8/T12 Lamp Holders • Thousands More Items. See website for details



18% BP | Lic. # - AL - Thomas Bowling - 5498 • MBA, Inc. - 288 | TN - Thomas Bowling, Princ. Auctioneer - 7121

**MYRON BOWLING AUCTIONEERS, INC.** (513) 738-3311 | MyronBowling.com **DUDLEY RESOURCES**

WEBCAST AUCTION

COMPANY CLOSING - SEMI-NEW MACHINERY INSTALLED  
**SOMIN COMPAÑIA MINERA DE SONORA SA PI DE CV**  
 HERMOSILLO, SONORA 83293 MEXICO  
**WED, JULY 19 at 10AM CST**  
 Inspection - Day prior to auction from 9AM - 4PM

**2018 CAT 420F2 IT Backhoe Loader • 2015 CAT 950GC Wheel Loader • CAT 950H/962h Wheel Loader • Thermal Kinetics Engineering PLLC 60,000-lb/hour 4-Effect Evaporation System - Padgett SS Crystallizer, & Evaporator, Gould Pump, Pressure Vessels • Culligan Reverse Osmosis Systems • Boilers • FEECO Gas Fired Rotary Dryer • Assorted Stainless Steel Tanks • Cooling Towers • Centrifugal Pumps • Vacuum Systems • Trucks • Generator • Ingersoll-Rand SSR EA100 Air Compressor & Dryer • Jaw Crusher • Mettler Toledo 85-Ton Truck Scale • Much More**



18% BP | Thomas Bowling, Auctioneer | See [MyronBowling.com](http://MyronBowling.com) for complete details

**MYRON BOWLING AUCTIONEERS, INC.** (513) 738-3311 | MyronBowling.com **MYRON BOWLING AUCTIONEERS MEXICO**

June

|                      |   |                              |                    |                           |
|----------------------|---|------------------------------|--------------------|---------------------------|
| 06/05/23 to 06/21/23 | Glenn A. Winternitz                       | ONLINE AUCTION               | CICERO, IL         | <a href="#">View &gt;</a> |
| 06/06/23             | Harris Auctioneers, Inc. • Harris Auction | Time Only Auction            | Webster, TX        | <a href="#">View &gt;</a> |
| 06/06/23             | Perfection Industrial Sales               | ONLINE AUCTION               | Freehold, NJ       | <a href="#">View &gt;</a> |
| 06/06/23             | Capital Recovery Group, LLC               | Online Internet Bidding Only | Richburg, SC       | <a href="#">View &gt;</a> |
| 06/08/23             | Perfection Industrial Sales               | ONLINE AUCTION               | Dallas, TX         | <a href="#">View &gt;</a> |
| 06/13/23             | Link Auctions                             | Online Auction               | Fishkill, NY       | <a href="#">View &gt;</a> |
| 06/13/23 to 06/14/23 | Cincinnati Industrial Auctioneers         | ONLINE ONLY AUCTION          | 2-locations,       | <a href="#">View &gt;</a> |
| 06/13/23             | Perfection Industrial Sales               | Live Auction Via Webcast     | Concord, NC        | <a href="#">View &gt;</a> |
| 06/13/23             | Cincinnati Industrial Auctioneers         | ONLINE ONLY AUCTION          | Fort Worth, TX     | <a href="#">View &gt;</a> |
| 06/14/23 to 06/15/23 | Infinity Asset Solutions Inc.             | ONLINE AUCTION               | Vancouver, Canada, | <a href="#">View &gt;</a> |
| 06/14/23             | Harris Auctioneers, Inc. • Harris Auction | Time Only Auction            | Austin, TX         | <a href="#">View &gt;</a> |
| 06/14/23             | Plant & Machinery Inc.                    | LIVE ONLINE WEBCAST AUCTION  | Daytown, TX        | <a href="#">View &gt;</a> |
| 06/14/23             | Cincinnati Industrial Auctioneers         | ONLINE ONLY AUCTION          | West Jordan, UT    | <a href="#">View &gt;</a> |
| 06/14/23             | Myron Bowling Auctioneers, Inc.           | Webcast Only Auction         | Christopher, IL    | <a href="#">View &gt;</a> |
| 06/15/23             | Link Auctions                             | ONLINE AUCTION               | Broken Arrow, OK   | <a href="#">View &gt;</a> |
| 06/15/23             | Workingman Capital Corp.                  | LIVE WEBCAST ONLY AUCTION    | Toronto, Ontario,  | <a href="#">View &gt;</a> |

Click Here

to Visit the

Auction Calendar